

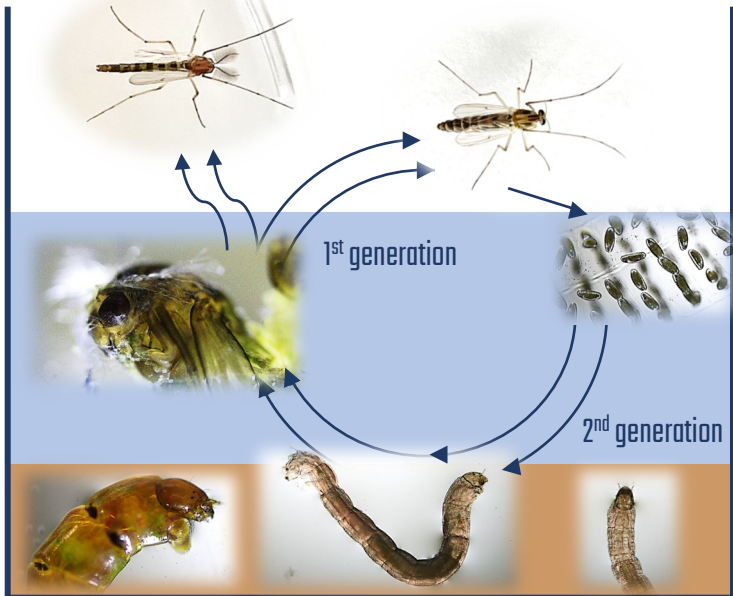
## OECD 233

### Sediment-Water Chironomid Life-Cycle Toxicity Test

Covering the 1<sup>st</sup> generation and the early part of the 2<sup>nd</sup> generation.

#### Endpoints

- Total number of adults emerged (1<sup>st</sup> & 2<sup>nd</sup> generation)
- Development rate (1<sup>st</sup> & 2<sup>nd</sup> generation)
- Sex ratio of fully emerged and alive adults (1<sup>st</sup> & 2<sup>nd</sup> generation)
- Number of egg ropes per female (1<sup>st</sup> generation) and fertility of the egg ropes (1<sup>st</sup> generation)



GG BioTech Design GmbH

Neu-Ulrichstein 5

D-35313 Homberg (Ohm)

Email [info@ggbiotechdesign.com](mailto:info@ggbiotechdesign.com)

